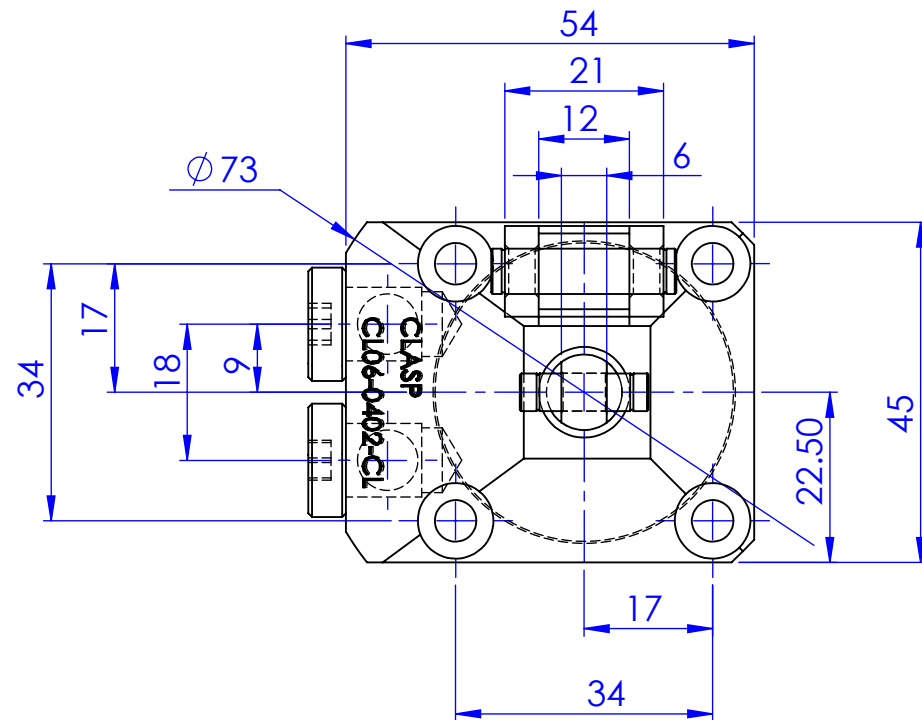
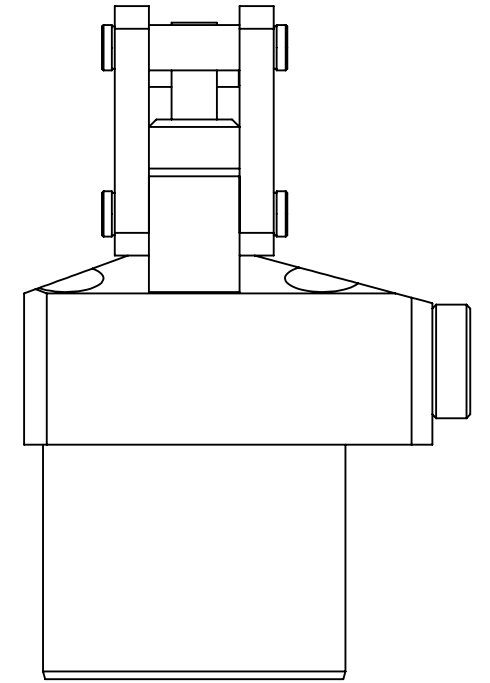
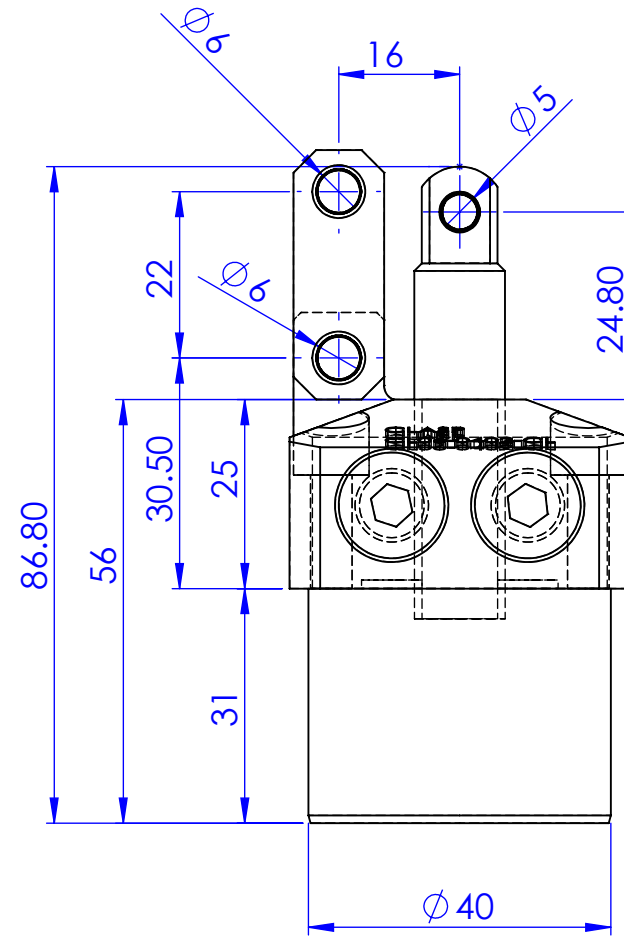
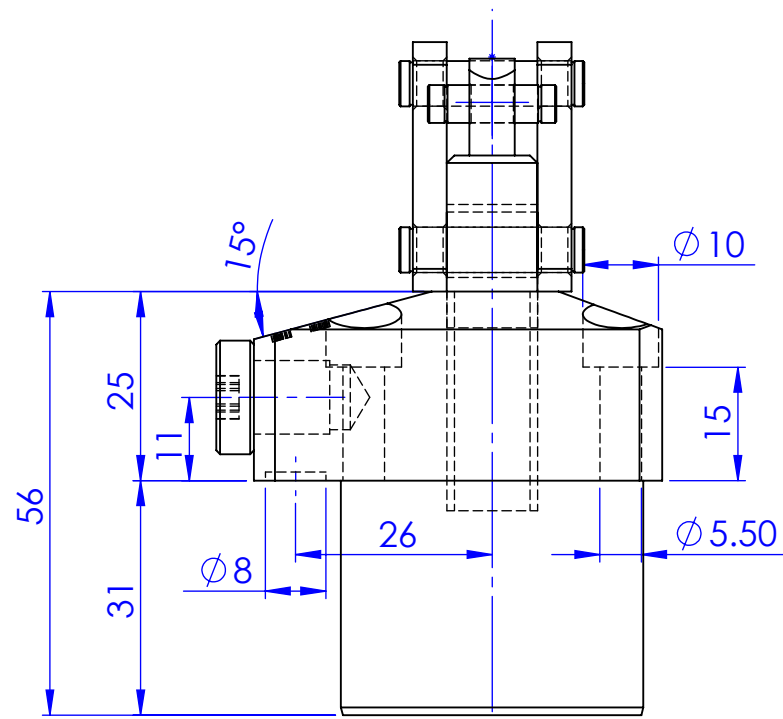
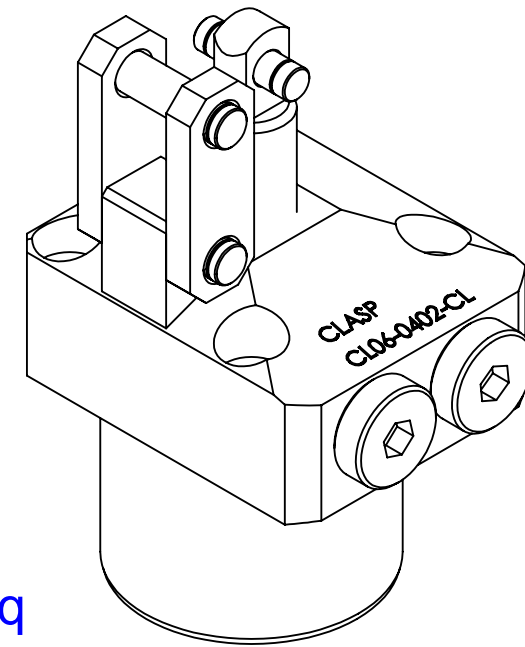





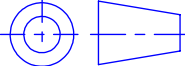


DEBURR



CL06-0402-CL  
Bore dia - 25mm  
Piston dia - 12mm  
Full stroke -20mm  
Locking stroke - 17mm  
Lock cyl.area - 4.9cmsq



Surface Finish															ZONE	SCALE	1:1		
Ra Value $\mu\text{m}$	0.025	0.05	0.1	0.2	0.4	0.6	0.8	1.2	1.6	2.5	5.0	10				MATERILAS			
Ra Symbol	N1	N3	N2	N4	N5	N6	N7	N8	N9	N10	N11	N12							
																GROUP No:—	WEIGHT		
																LINK	1.15KG		
			DESCRIPTION												Qty.  — —	Casting/forging/ welding drg.no			
Drawn	Prabhakar	DESCRIPTION																	
Checked	Prabhakar	CL06-0402-CL																	
Approved	19/09/21																		
Date	19/09/21													Drawing NO					
Clamping elements type			CLASP  BANGALORE-72												SHEET: 1 of 1		Sheet No:  1/1		

General Tolerance where not specified									
Liner - length or Diameter					Angular-length of shoter side of the angle				
0.5-6	6-30	30-120	120-315	315-1000	1000-2000	Upto 6	6-30	30-120	120-400
±0.1	±0.2	±0.3	±0.5	±0.8	±1.2	±1°	±30°	±10°	±20°